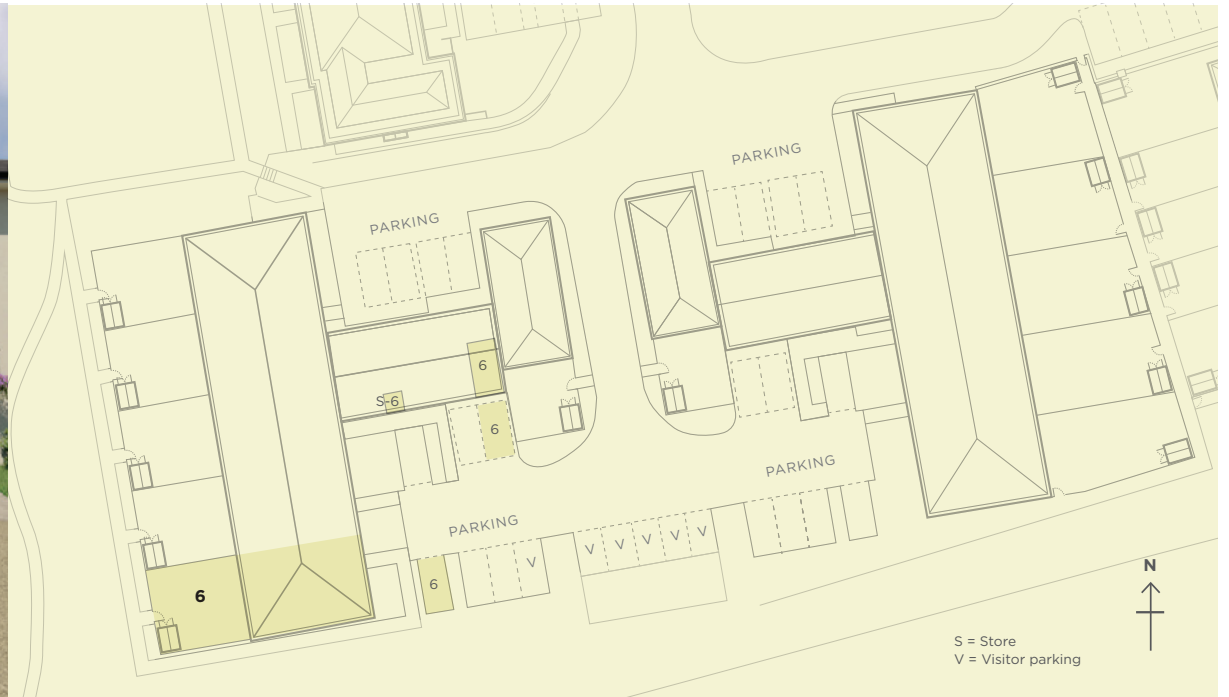




# FRITH PARK

## STABLE MEWS

NO. 6  
FOUR BEDROOM END-OF-TERRACE VILLA

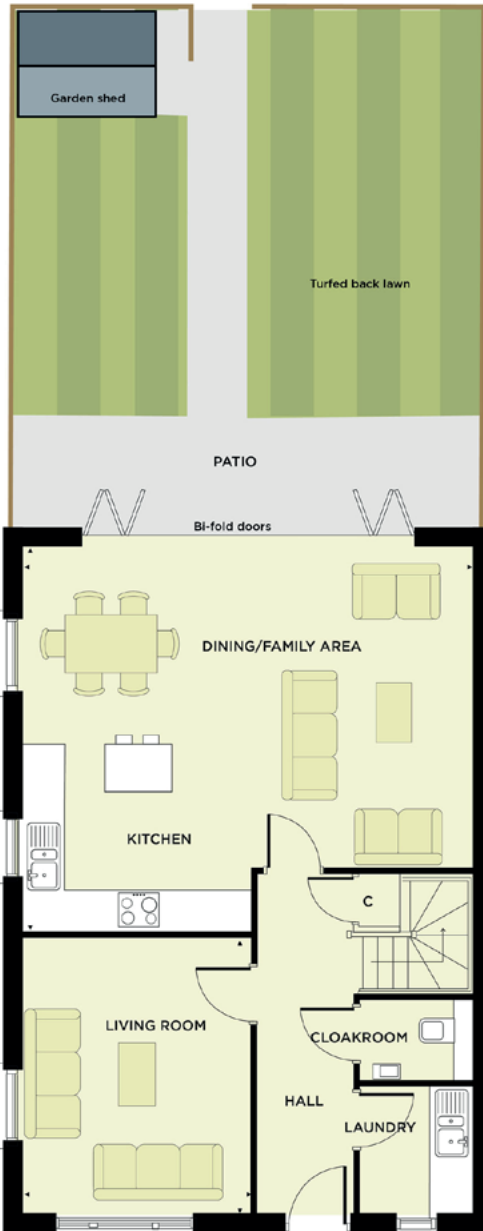


Savills Guildford  
244-246 High St, Guildford GU1 3JF

01483 796810

**KEY:** C Cupboard W Fitted wardrobe L Loft hatch access to boarded loft area with ladder and light

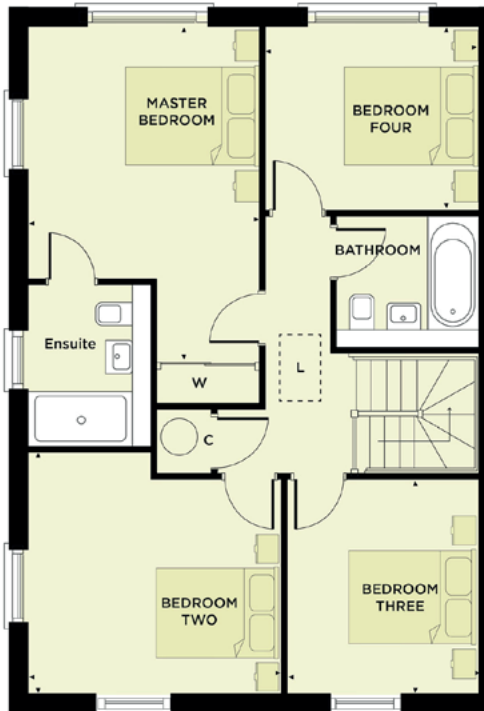
This information is for guidance only. The dimensions given are subject to minor variations (+ or - 5%) and are not intended to be used for carpets sizes, appliance sizes or items of furniture. Furniture shown is not included and are shown as indicative only. Details contained here may change and should not be relied upon as statements of fact or representation and applicants must satisfy themselves by inspection or otherwise as to their correctness. This information does not constitute a contract or warranty.



## 6 STABLE MEWS

This four bedroom end-of-terrace villa offers flexible living space, perfect for today's modern lifestyle. The main living space is the light and airy open-plan kitchen, dining and family area with level threshold bi-fold doors opening onto the turfed back garden and glorious views of the ancient woodland beyond. A separate living room to the front of the homes offers the perfect formal entertaining space or TV break out room. A cloakroom and separate laundry room complete the downstairs accommodation. Upstairs are four double bedrooms, with the master bedroom offering double aspect views over the ancient woodland and surrounding countryside. An ensuite walk-in shower and fitted wardrobes complete the room. There is additional storage provision in the boarded loft complete with ladder and light. The home comes with a garage and a further two parking spaces.

### INTERIOR DECOR: Heather



#### GROUND FLOOR

Kitchen/Family/ Dining area	6.72m x 5.73m
Living room	4.10m x 3.38m
	13'05" x 11'01"

#### FIRST FLOOR

Master Bedroom	5.04m x 3.40m
	16'06" x 11'02"
Bedroom Two	3.72m x 3.57m
	12'02" x 11'08"
Bedroom Three	3.16m x 2.88m
	10'04" x 9'05"
Bedroom Four	2.72m x 3.21m
	8'11" x 10'06"

**TOTAL FLOOR AREA** 133m<sup>2</sup> 1,431 ft<sup>2</sup>

#### PARKING

One garage and two parking spaces.